

Monday a.m., May 22 – The Louvre



The kings of France lived at the Louvre palace before Louis XIV moved his court to Versailles. After the French Revolution, the Louvre became the largest museum in the world, home to the Mona Lisa and other great works of art. Four glass pyramids designed by I.M. Pei bring light into the building.

Photos by Robert Judd.

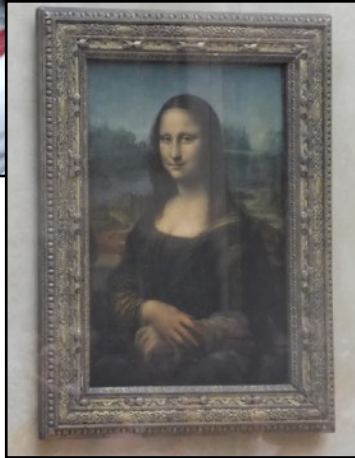


Hands off Venus de Milo



Many say
Venus de Milo
epitomizes
female beauty.

The Mona Lisa



Some people say the Mona Lisa is small. Actually, it isn't. It's life size. It seems small because it's kept well back from visitors.

Top: *By Robert Judd.*

Middle: *By Mike Jarvis.*

Right: Guide Desirée with a close-up version of the Mona Lisa.

By Cathy Britt.





Top: Napoleon's coronation by artist Jacques Louis David. *By Robert Judd.*

Middle: Winged Victory of Samothrace.

Right: Artist in residence. *By Pat Greenfield.*